

ALIUM

Nosepad Replacement

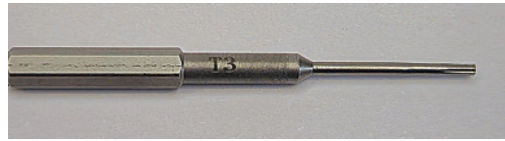
Spare Parts Guide for CSS,
Sales Representatives, and Customers

2024

Tools and Thread Locker



DEG TORX screwdriver



DEG TORX screwdriver



DEG TORX screwdriver



Pliers (It can be any pair of pliers with a firm grip)

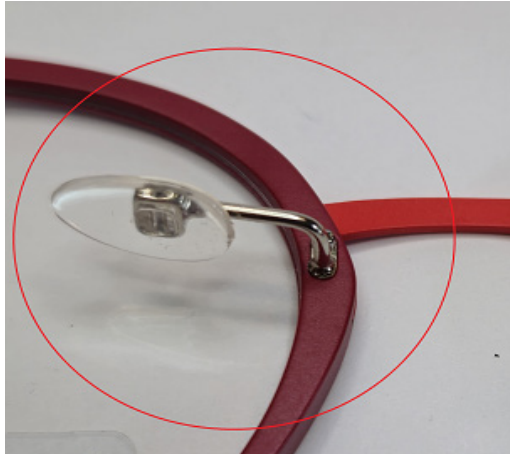


Thread locker (It can be any brand)

Various Possible Faults on Nosepad arms:

Cold soldering (with screw. VISMA: PP39):

The nosepad arm is not broken off but turn around or has fallen out. The frame can be repaired.



Broken nosepad arms (nosepad without screw VISMA: PP08):

The nosepad arm is broken off:
the frame cannot be repaired

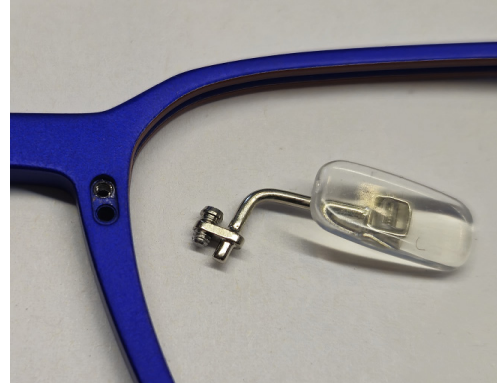


The nosepad arm is broken off:
The nosepad arm can maybe be repaired if the base is loose or can be pryed out as described in this document



Nosepad arm has fallen off (Visma: PP08 + PP39)

Nosepad arm is loose or has fallen out. The frame can be repaired as described later in this document



Defect nosepad screws (PP39)

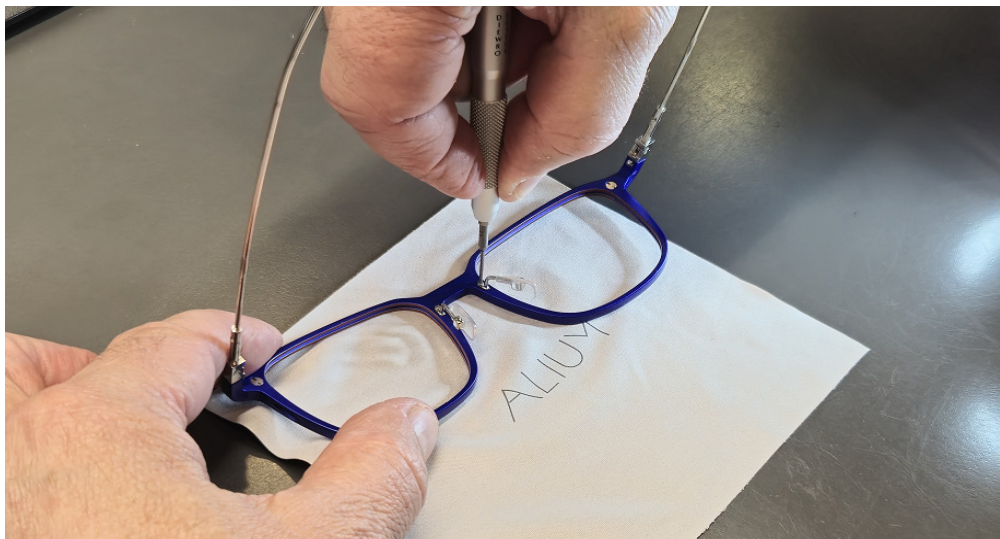
Can maybe be replaced. See description later in this document.



Removal and Replacement of Nosepad Arms

How to unscrew the nosepad arm without damaging the T3 Torx screw:

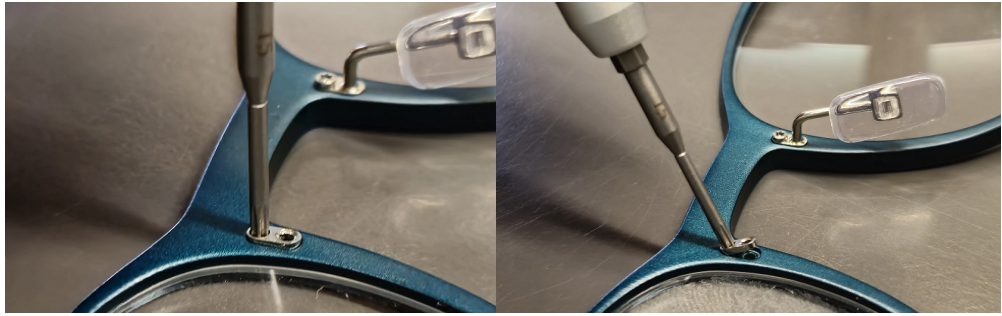
Place the frame on a flat stable surface. Keep a firm grip and pressure and unscrew the T3 screw. This technique can also be used to try to unscrew a damaged T3 screw:



If the nosepad arm is already loose, unmount it with your fingers. If the nosepad arm is not broken near the base and you cannot remove it with your fingers or a pair of pliers, take out the lenses and heat the area around the nosepad arms in a heater. Hold the hot front with a cloth, and with a firm grip, use a pair of pliers to pull and wiggle the nosepad arm from side to side until it comes loose.



If it is a cold solder and the nosepad arm is missing, keep a firm grip and apply pressure while unscrewing the T3 screw. Use the T5 screw bit, place the tip of the T5 bit in the screw hole, and pry off the nosepad arm base plate.

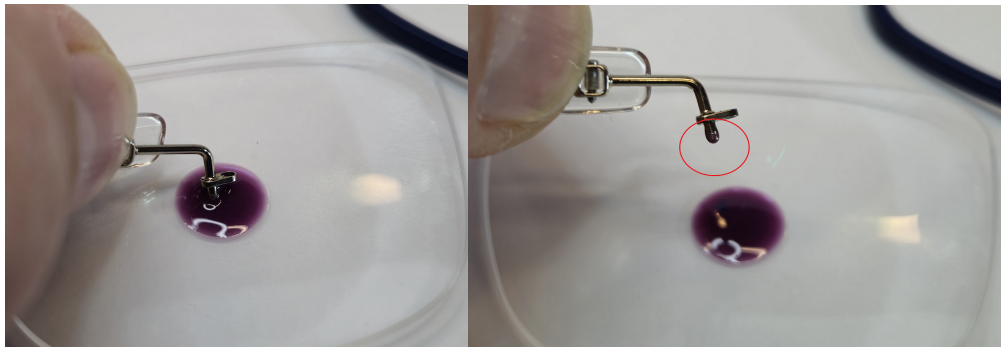


If the nose pad arm is broken at the base, it can be difficult to remove. Try to pry it off with the T5 screw bit. If the base comes loose, the frame can be repaired. However, if the base breaks without the part coming loose, the frame cannot be repaired.

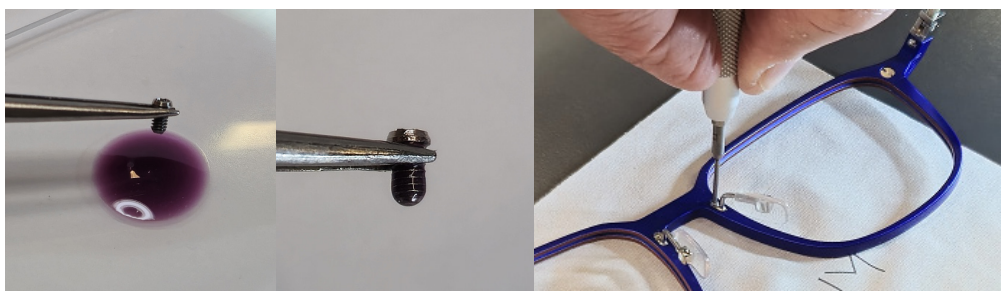


Remount the Nosepad arm with T3 screw:

Clean the hole in the front. Apply thread locker to the pin of the nose pad arm and place it into the frame.

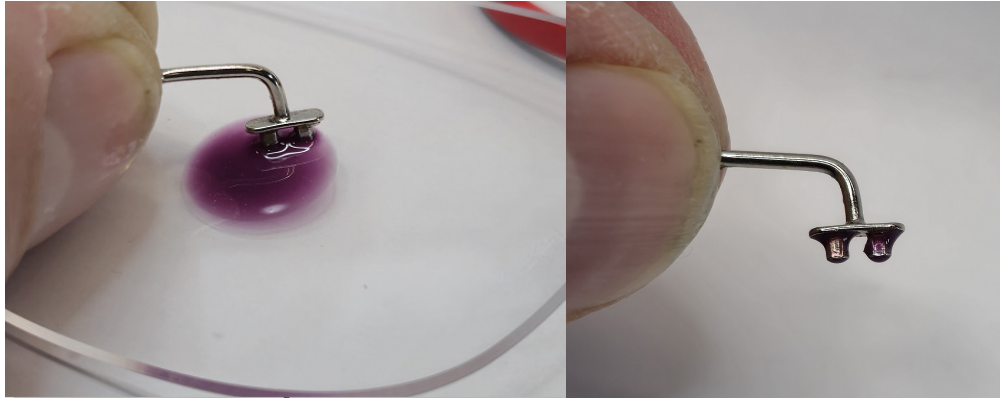


Add Thread locker to the screw and mount the screw. The thread locker will achieve full bond strength in approximately 30 minutes. The curing process will be complete in 24 hours.



Remount the Nosepad arm without screw (Visma PP08):

Clean the hole in the front. Apply thread locker to the pin of the nosepad arm and place it into the frame.



Mount the nosepad arm. Press the base of the nosepad arm into the front using a pair of plastic jaw pliers or a plastic pen, or a similar semi-soft item.



The thread locker will achieve full bond strength in approximately 30 minutes. The curing process will be complete in 24 hours.